

Debbie Bliss

egg cosy pattern



**CHRISTMAS
JUMPER DAY**
FRIDAY 14 DECEMBER 2012

After years in style exile, the christmas jumper is back — and it's helping to change the world.
Get everyone at work to wear a woolly wonder and **donate £1 each to help save children's lives.**



Save the Children





Materials

- * One 50g ball in each of Debbie Bliss Cashmerino DK in Red 04 (R) and Rialto DK in Ecru 02 (C) and Moss 10 (G) and oddments in Black 03 (B) and Gold 45 (Gd).
- * Pair of 3.25mm knitting needles.

Size

To fit medium sized egg cup approx 17cm/6¾in in circumference.

Abbreviations

beg = beginning; **k** = knit; **p** = purl; **st(s)** = stitch(es);
st st stocking stitch; **tog** = together; **yf** = yarn forward;
C2B = k into front of 2nd st on left hand needle, then
k first st, slipping both sts off needle together;
C2F = k into back of 2nd st on left hand needle then
k first st slipping both sts off needle together;
MB = [k into front and back] twice into next st, turn,
p4, turn, [k2tog] twice, then slip first st over 2nd st.

SNOWFLAKE SWEATER

Back and Front (both alike)

Note Snowflake can be knitted into the front using the chart or swiss darned after knitting.

With 3.25mm needles and C, cast on 21 sts.

1st row K1, [p1, k1] to end.

Change to G.

2nd row P1, [k1, p1] to end.

Begin with a k row, work 19 rows in st st from chart.

Next row P6, k1, [p1, k1] 4 times, p6.

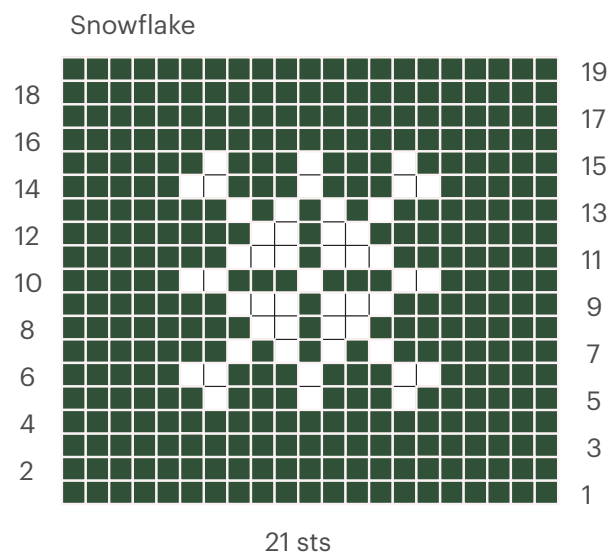
Next row Cast off 6 sts, [p1, k1] 4 times, cast off last 6 sts.

With wrong side facing, yarn to centre 9 sts, [p1, k1]

4 times, p1. Rib 5 more rows.

Using C, cast off in rib.

Join shoulder and neckband seams.



Sleeves

With right side facing, 3.25mm needles and G, pick up and k7 sts at each side of shoulder seam. 14 sts.

Beg with a p row, work 7 rows in st st.

Rib row [K1, p1] to end.

Rib 1 row.

Using C, cast off.

Join side and sleeve seams.



FATHER CHRISTMAS SWEATER

With 3.25mm needles and C, cast on 26 sts.

1st row (right side) P to end.

2nd row K1, * [k1, yf, k1] in next st, p3tog; rep from * to last st, k1.

3rd row P to end.

4th row K1, * p3tog, [k1, yf, k1] in next st; rep from * to last st, k1.

5th row P2, [p2tog, p3] 4 times, p2tog, p2. 21 sts.
Cut off C.

Beg with a p row, work in st st as follows:
10 rows R, 2 rows B and 7 rows R.

Next row Cast off 6 sts, p4, m1, p5, cast off rem 6 sts.
With wrong side facing, rejoin C to centre 10 sts, p10.
Rep 1st to 4th rows.

Cast off row Cast off purlwise and dec 2 sts evenly.
Embroider 2 buttons on front in B and a buckle in Gd.
Join shoulder and neckband seams.

Sleeves

With right side facing, 3.25mm needles and R, pick up and k7 sts at each side of shoulder seam. 14 sts.

Beg with a p row, work 4 rows in st st.

Change to C.

P 2 rows.

Next row K1, * [k1, yf, k1] in next st, p3tog; rep from * to last st, k1,

Cast off purlwise.

Join side and sleeve seams.



ARAN SWEATER

Back and Front (both alike)

With 3.25mm needles and C, cast on 24 sts.

Next Row [K1, p1] to end.

Next row [P1, k1] to end.

1st row (right side) P3, C2B, p3, [C2B, C2F] twice, p3, C2B, p3.

2nd row K3, p2, k3, p8, k3, p2, k3.

3rd row P3, C2B, p1, MB, p1, [C2F, C2B] twice, p1, MB, p1, C2B, p3.

4th row As 2nd row.

Rep these 4 rows 3 times more, then work the 1st and 2nd rows again.

Next row Cast off 8 sts, with 1 st on needle after cast off, [p1, k1] 3 times, p1, cast off rem 8 sts.

With wrong side facing, rejoin yarn to centre 8 sts, [p1, k1] 4 times.

Rib a further 6 rows.

Cast off in rib.

Join shoulder and neckband seams.

Sleeves

With right side facing and 3.25mm needles, pick up and k8 sts (over 10 rows) at each side of shoulder seam. 16 sts.

1st row K2, p2, k3, p2, k3, p2, k2.

2nd row P2, C2B, p1, MB, p1, C2B, p1, MB, p1, C2B, p2.

3rd row As 1st row.

4th row As 2nd row.

Rib row [K1, p1] to end.

Rib 1 row.

Cast off in rib.

Join side and sleeve seams.